

Force monitoring systems for all metal forming machines such as

- Cold headers
- Multi-die cold formers
- Thread rollers
- Stamping Presses
- Multi-Slides

4.3" Touch-Screen - SK 1

7.5" CE Touch Screen - SK 3

Very easy to operate

1 - 8 channels

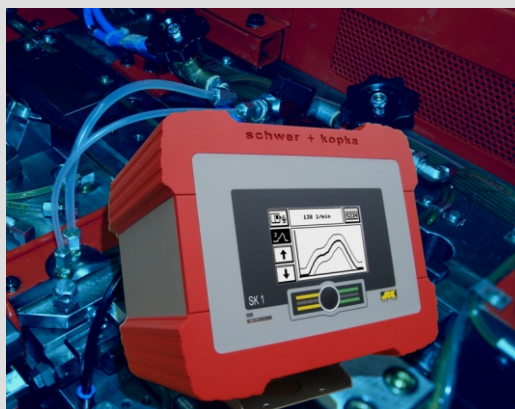
SK-Smileymaster[®]
features fully automatic
enveloping

4 Part Counters

Quick-Install-Technology

Connects to **IMPAX TSS-NET**

Supports a number of
Software upgrades



SK 1

SK 3



Process monitoring systems with 4.3" or 7.5" touch-screens

The **SK** process monitoring systems are equipped with our new **SK-Smileymaster**[®] monitoring technology for presses and thread rollers. The fully automatic monitoring software ensures that even untrained operating personnel can make full use of the monitoring system at all times. The large touch-screens make the **SK 1** and **SK 3** particularly well suited for multi-channel applications and for data networking. These systems offer four different counters which are very easy to operate via the touch screen panel. The Quick-Install-Technology reduces installation times drastically. In conjunction with our Quick-Install-Sensors, the system is even suitable for self-installation by the end user.

Performance SK 1 & SK 3

Monitoring Functions

- Envelope monitoring
- Up to 8 channels (force sensors)
- **SK-Smileymaster®**:
 - fully-automatic and dynamic calculation of process-adopted envelope limits
 - automatic setting of timing windows
 - latest monitoring strategies for best possible error detection

Technical Features

- 4.3" STN touch-screen (b/w) or 7.5" TFT color touch-screen
- Single-button operation
- Attractively designed compact enclosure made from specially moulded aluminium profiles
- CE-rated
- Numerous mounting options (yoke, swivel, floor pedestal, panel mount)
- 4 part counters for job size, tool life, parts made in unattended shifts, and batching systems
- Sort pulse output via relay
- Batching pulse output via relay
- Indication of current machine speed
- **SKTelemaster** for remote diagnosis

Technical Data

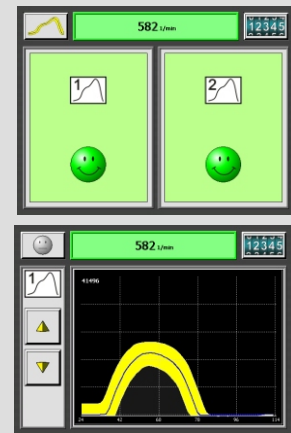
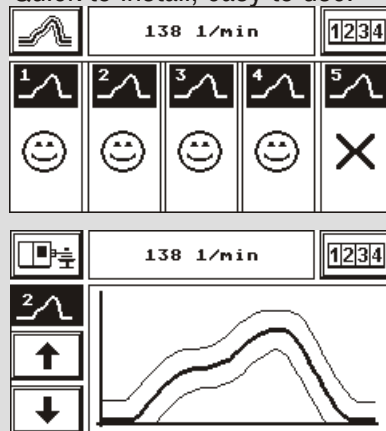
- Powerful, high performance digital signal analysis processor
- 1 - 8 sensor inputs
- 3 relay outputs (potential free)
- Data ports: serial RS-232
optional: Ethernet, Teleservice
- Reliable flash memory
- Prepared for connection to **IMPAX TSS-NET**
- High-output Digital Signal Amplifiers

Dimensions enclosure / weight:
250 W x 208 H x 174 D (mm) / 4 kg
Power supply: 85 - 265 VAC, 50/60 Hz

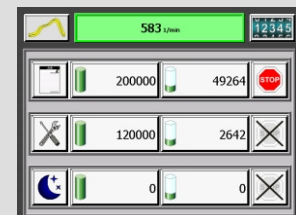
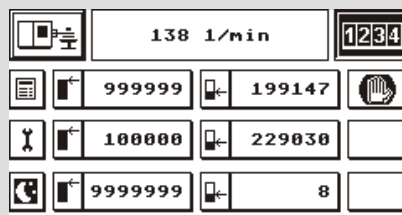


Please note that some functions explained in this leaflet may be optional items even if not specifically mentioned. Modifications remain possible without prior notice.

Quick to install, easy to use:



The newly designed display screens combined with a strongly intuitive way of operation via touch-screen make it very easy to utilize the advanced **monitoring** technology, even for untrained personnel. "Smiley" symbols judge process stability and inform about the current monitoring quality. The optional module "**curve display**" of the **SK 1** visualizes the force curves for each channel.



Easy-to-use part counters are available for order size, tool life, blind shift operation and batching systems.



Change of operation modes is either fully automatic, or very simply effected with just a push of the single button on our new operating panel.

Quick-Install-Technology.

All cables are provided with plug-in connectors allowing for a quick and secure installation.

